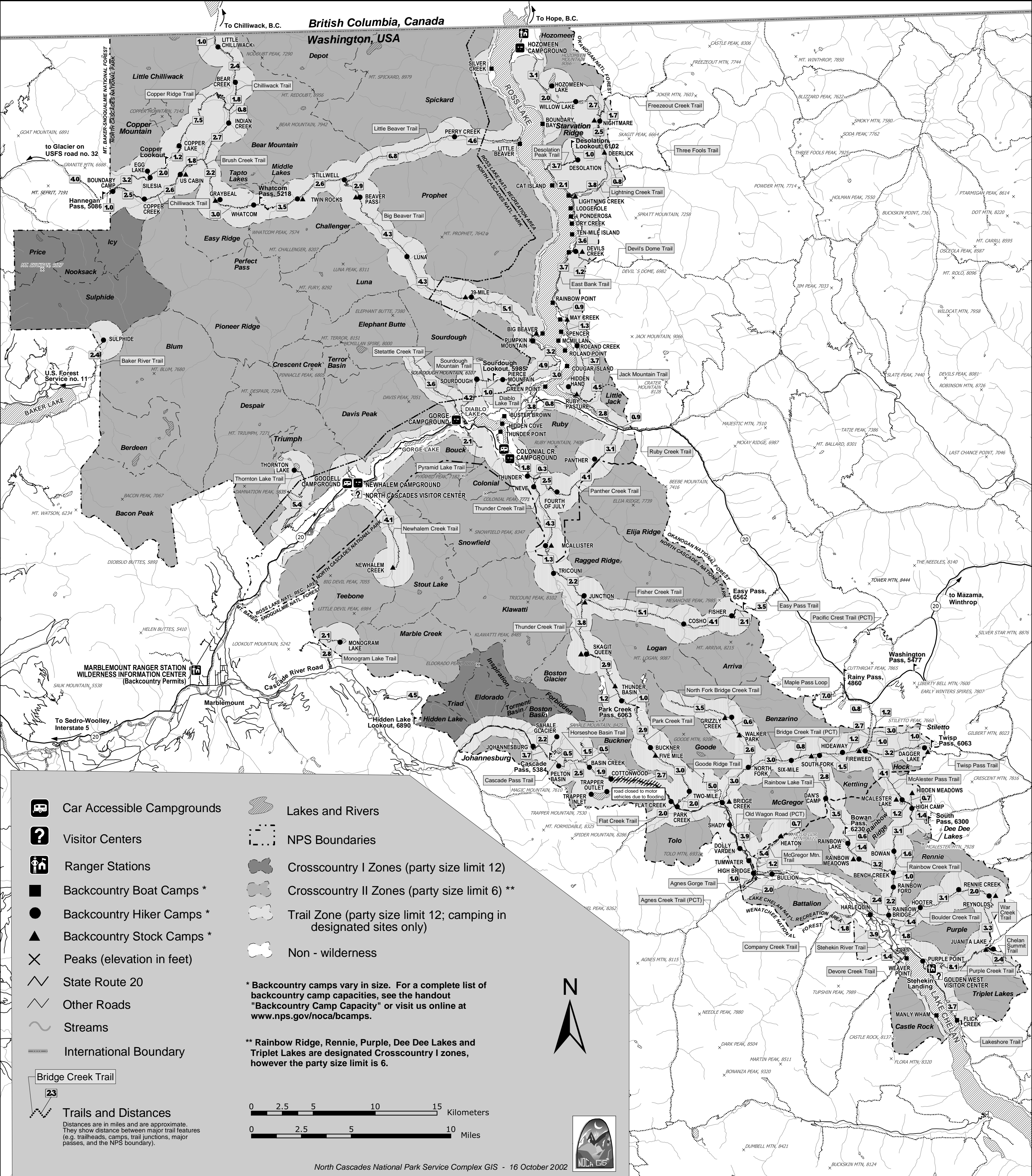


North Cascades National Park Service Complex: Backcountry Camps & Crosscountry Zones

ABOUT THIS MAP: This map is for general reference only and is not intended for navigational purposes. Locations and mileages may vary. Individual crosscountry zone boundaries generally follow ridgelines and streams. Special camping conditions exist in certain areas. These may include grazing or stock restrictions, special food storage concerns, prohibition of fires and/or composting toilet facilities. Contact the Wilderness Information Center in Marblemount for further information.



- Car Accessible Campgrounds
- Visitor Centers
- Ranger Stations
- Backcountry Boat Camps *
- Backcountry Hiker Camps *
- Backcountry Stock Camps *
- Peaks (elevation in feet)
- State Route 20
- Other Roads
- Streams
- International Boundary
- Lakes and Rivers
- NPS Boundaries
- Crosscountry I Zones (party size limit 12)
- Crosscountry II Zones (party size limit 6) **
- Trail Zone (party size limit 12; camping in designated sites only)
- Non-wilderness

* Backcountry camps vary in size. For a complete list of backcountry camp capacities, see the handout "Backcountry Camp Capacity" or visit us online at www.nps.gov/noca/bcamps.

** Rainbow Ridge, Rennie, Purple, Dee Dee Lakes and Triplet Lakes are designated Crosscountry I zones, however the party size limit is 6.

Bridge Creek Trail
23

Trails and Distances

Distances are in miles and are approximate. They show distance between major trail features (e.g. trailheads, camps, trail junctions, major passes, and the NPS boundary).

